



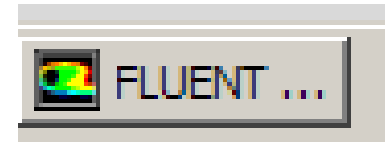
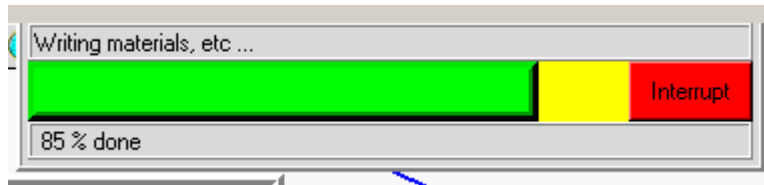
# Using ice-solv Feature without ice-pak

# Fluent Solver – ice-solve

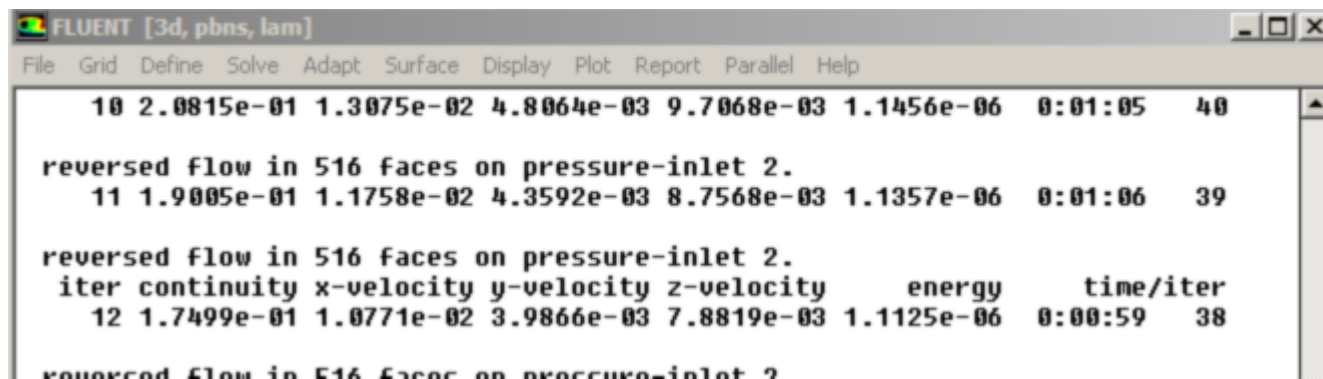
- ⇒ It is possible to use the Fluent Solver independently from Icepak.
  
- ⇒ Advantages for eCADFEM:
  - It is possible to start several jobs in parallel.
  - It is possible to run jobs over night – when the job is finished, it will be closed automatically.

# Single Run

- ⇒ Start the job in Icepak as usual.
- ⇒ Wait until Icepak writes files for Fluent and then Fluent will be visible in the task bar.

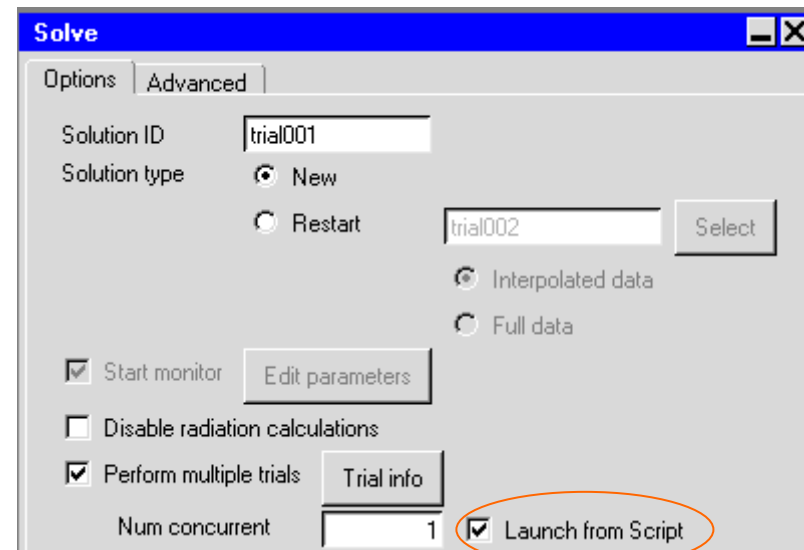
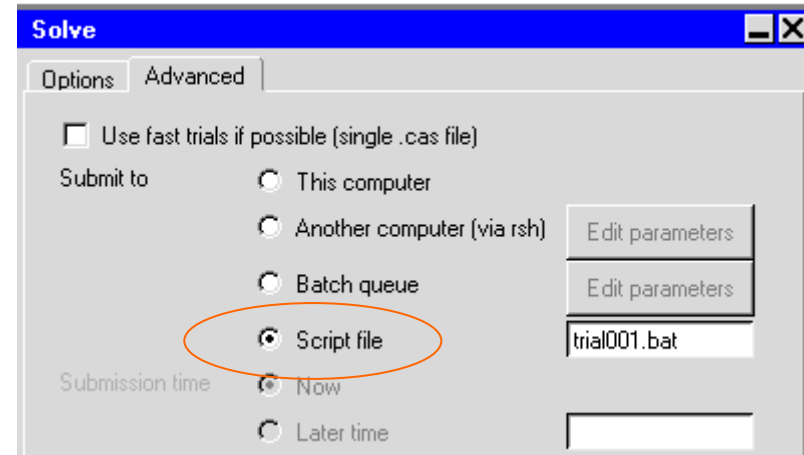


- ⇒ Close Icepak. One can still see residuals in the Fluent Window.



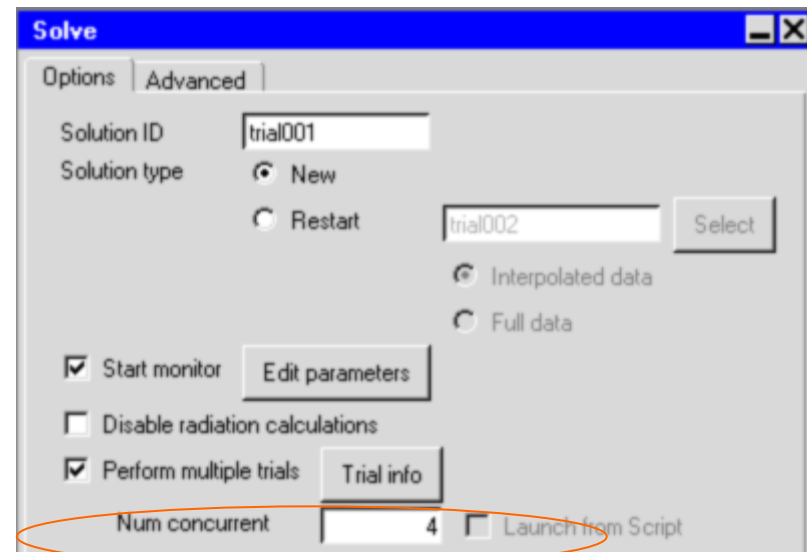
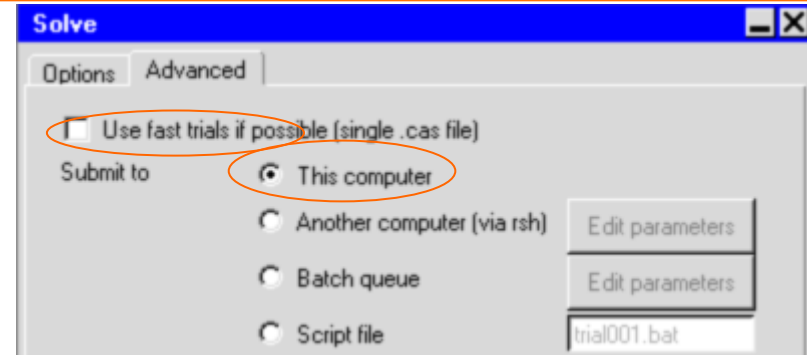
# Multiple Trials - Consecutive

- ⇒ Define Trials as usual.
- ⇒ Choose both
  - Submit to script file
  - Launch from the script
- ⇒ Make run and wait until Icepak writes all files and starts Fluent
  
- ⇒ Close Icepak.



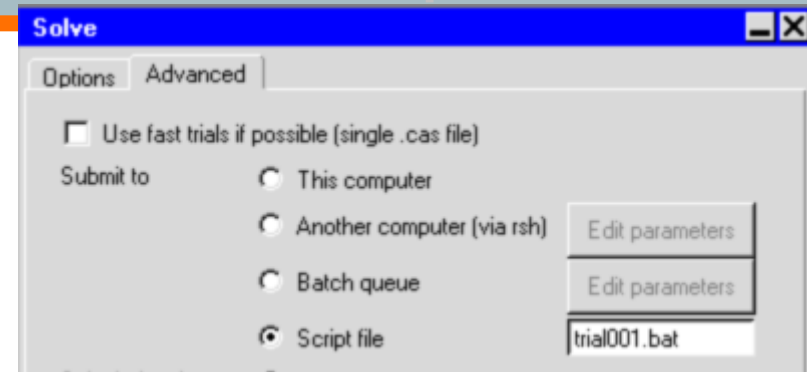
# Multiple Trials – Parallel

- ⇒ Here it is assumed that runs do not depend on each other.
- ⇒ Define trials as usual.
- ⇒ Use send to this computer and make sure that Use fast trials is not checked.
- ⇒ Define the number of runs
- ⇒ Run, wait until Icepak writes Fluent files and starts all Fluents.
- ⇒ Close Icepak.



# Using an option Submit to Script File

- ⇒ Is working both for a single run and multiple trials.
- ⇒ Choose Submit to script file in Icepak.
- ⇒ Make run. Now Icepak only writes files but does not start Fluent.
- ⇒ Do this for as many projects as you need.
- ⇒ Close Icepak.



- ⇒ Double click on the batch file to start Fluent.
- ⇒ You can start several jobs in parallel.
- ⇒ Alternatively for a consecutive execution of several jobs, merge all batch files together and run the resulting batch file.

# Displaying Monitors or Stopping Fluent

- ⇒ Start Icepak
- ⇒ Open the project
- ⇒ Make Solve | Solution monitor
- ⇒ If necessary close Fluent by choosing Terminate
- ⇒ Close Icepak

